

Preparation of IDBridge K3000

Before issuing vSEC:CMS software onto a **new** Gemalto IDBridge K3000 device, the device needs to be prepared using a software tool from Gemalto called the Toolbox (aka the Gemalto SG Core Toolbox). This document describes step-by-step, in detail how this is done. Should you still have any problem in preparing the IDBridge K3000, please contact Versatile Security:

<http://versatilesecurity.com/versatilesecurity-contact.php>

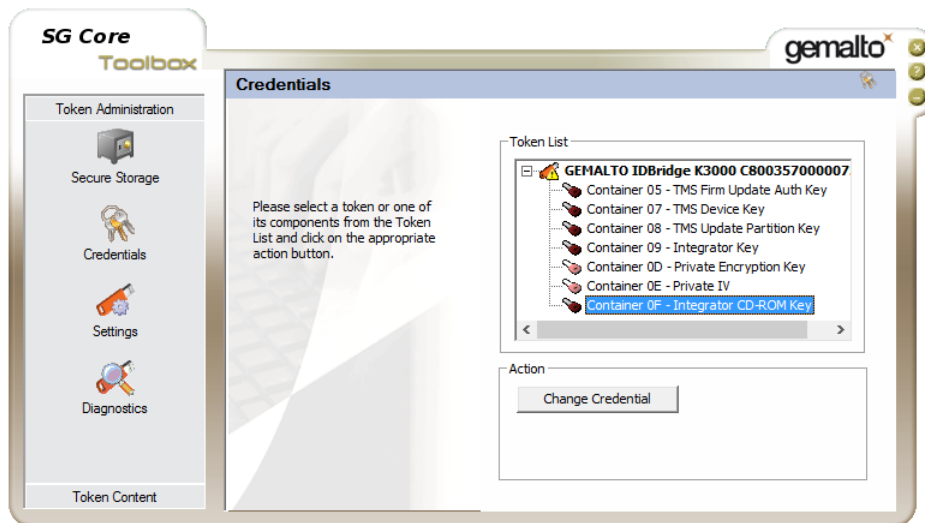
Step 0: Insert Device and Start the Toolbox

1. Make sure that an Internet connection is available.
2. Insert Device and wait for Windows update to install all drivers.
3. Start the Toolbox.



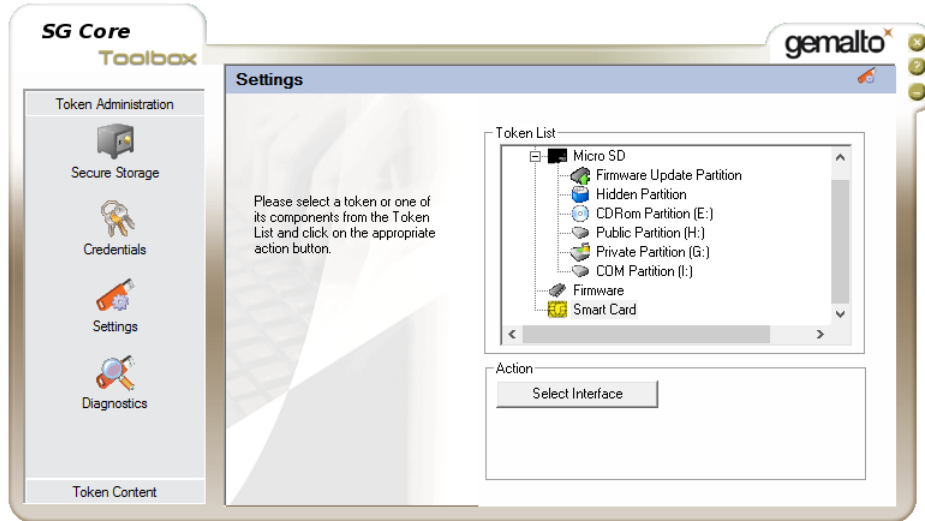
Step 1: Set Credentials

From the Token Administration menu select Credentials.

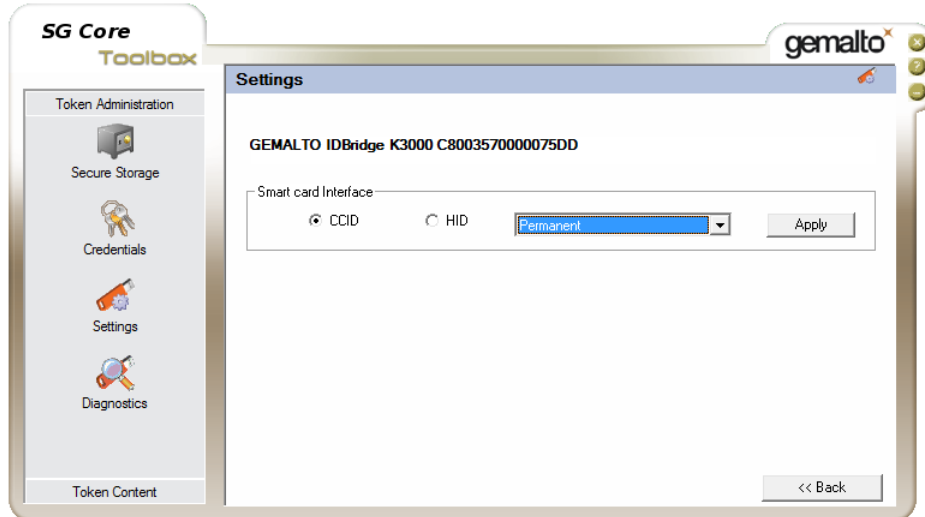


Step 2: Permanent CCID

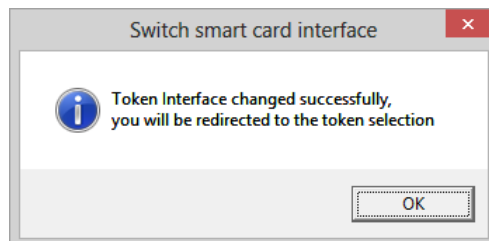
1. From the Token Administration menu select Settings.
2. From the Token List select Smart Card.
3. Hit the Select Interface button.

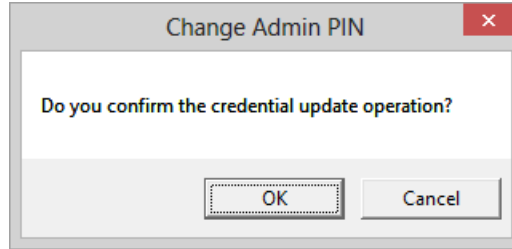


4. Select the radio button CCID.
5. Select the drop down menu selection Permanent.
6. Hit the Apply button.

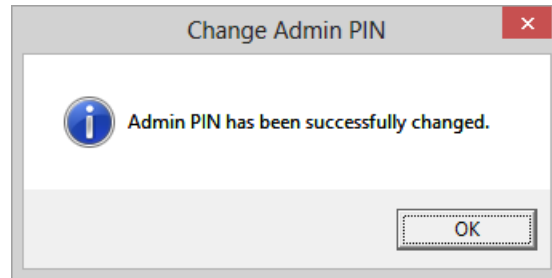


Validate that the operation was successful.



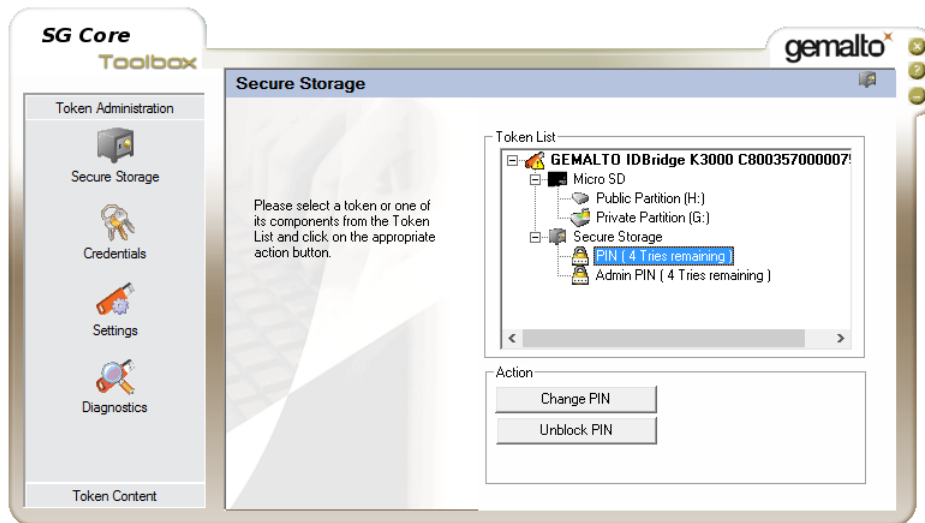


9. Validate that the operation was successful.

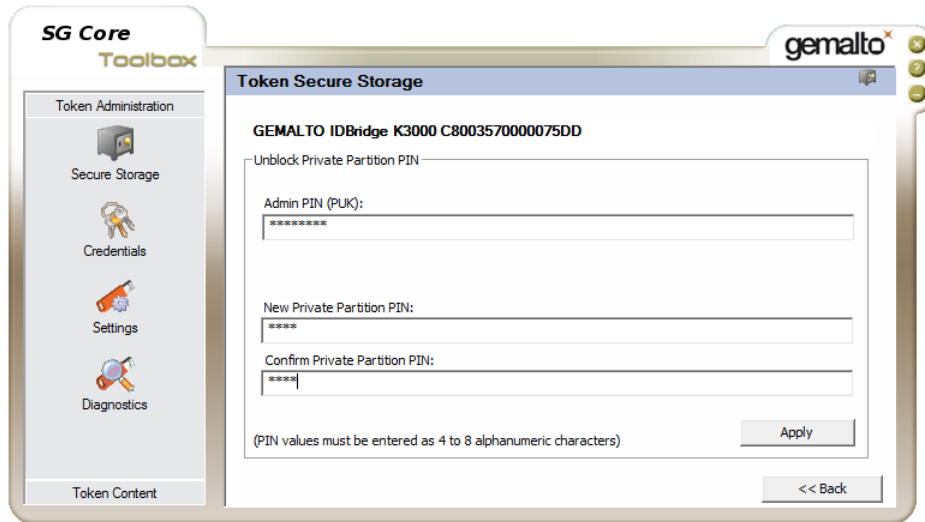


Step 4: Change PIN

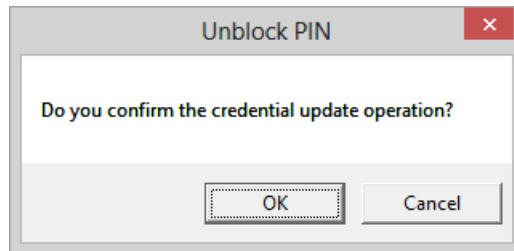
1. From the Token Administration menu select Secure Storage.
2. From the Token List Menu, select PIN.
3. Hit the Unblock PIN button.



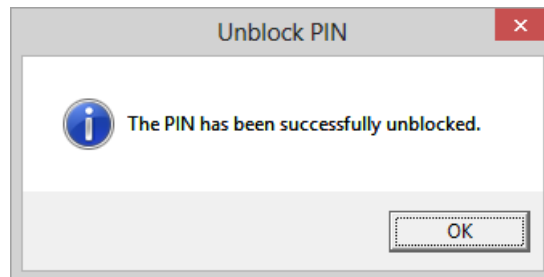
4. In the field Admin PIN enter: 12345678
5. In the field New Private Partition PIN enter: 0000
6. In the field Confirm Private Partition PIN enter: 0000
7. Hit the Apply button.



8. Confirm the operation by hitting the OK button.

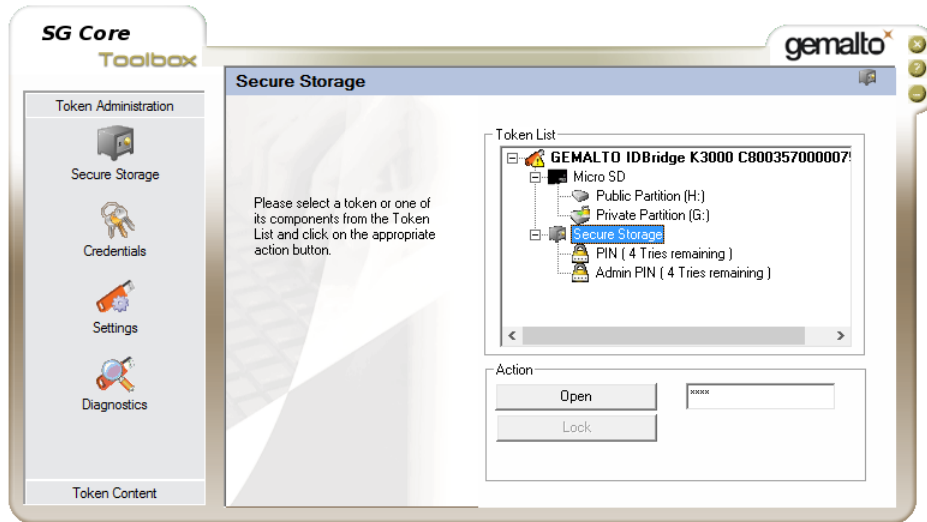


9. Validate that the operation was successful.

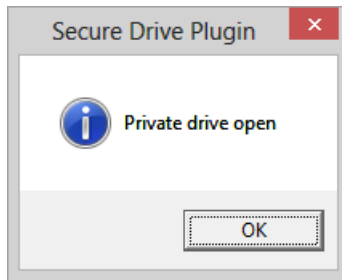


Step 5: Format Private Partition

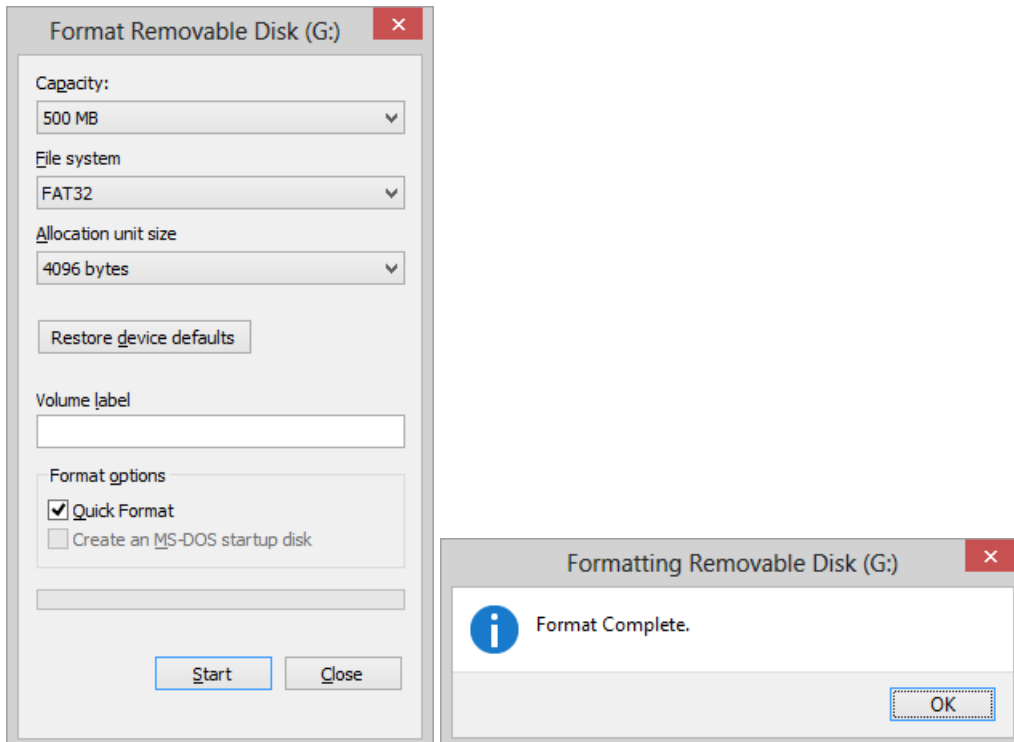
1. From the Token Administration menu select Secure Storage.
2. From the Token List select Secure Storage.
3. To the right of to the Open button there is an unnamed field, enter 0000 (the PIN) here.
4. Hit the Open button.



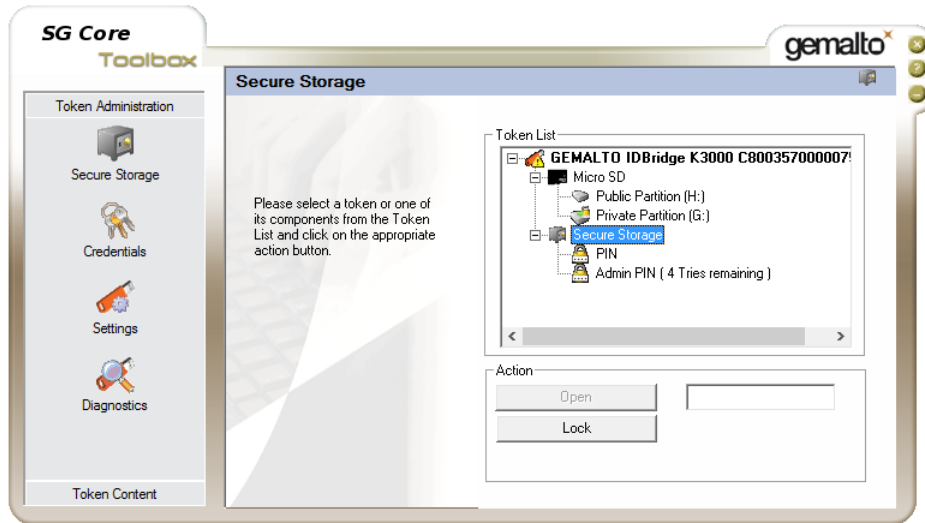
5. Confirm that private partition is open.



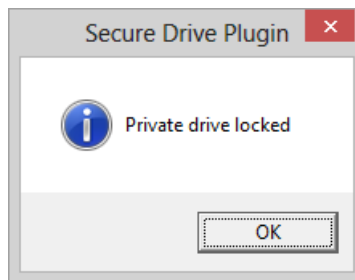
6. Using your file browser, find the open private drive and format it to FAT32.



- When the formatting is completed, go back to the Toolbox and hit Lock



- Confirm that the drive is locked again.



- The Toolbox application can now be closed.
- This completes the preparation of the IDBridge K3000 device for vSEC:CMS usage.